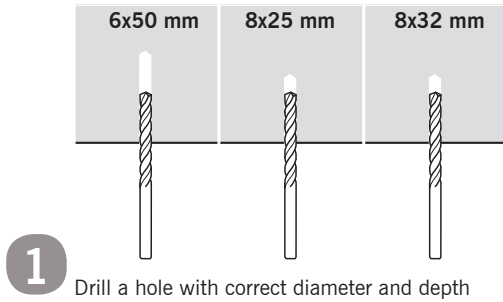
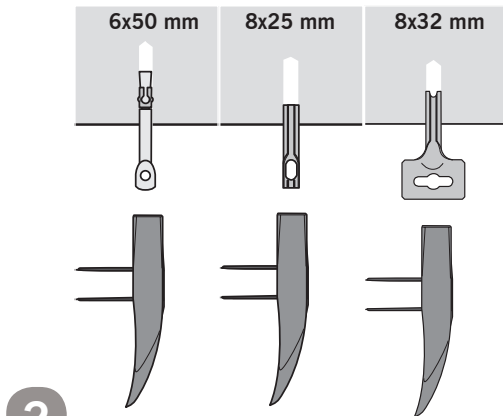


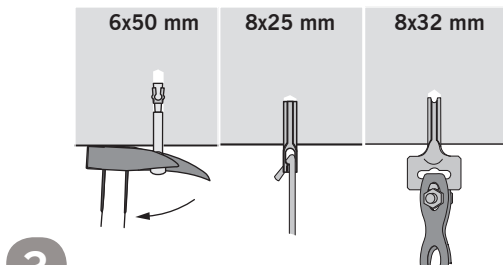
Installation:



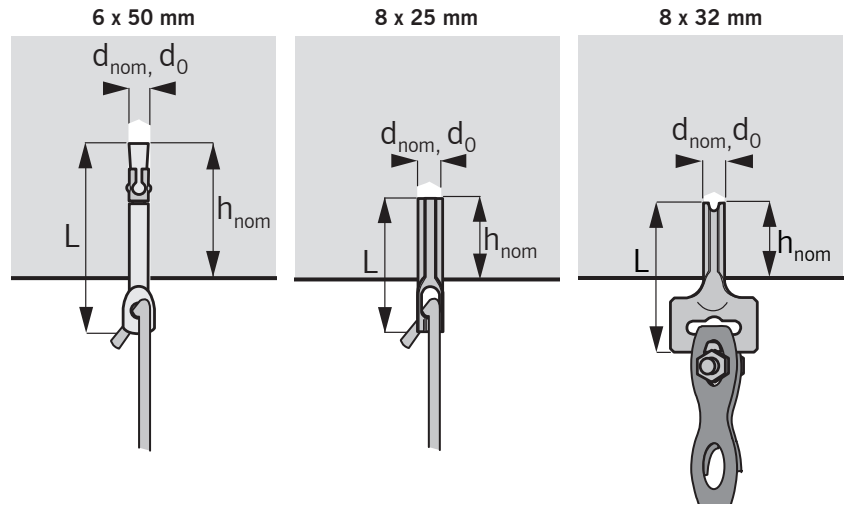
1 Drill a hole with correct diameter and depth



2 Drive the Ceiling Anchor in with a hammer



3 When Ceiling Anchor is strained the anchor expands
When the Spring Steel Ceiling Anchor is hammered in the spring steel presses against the sides of the drilled hole creating a strong and reliable resistance



Type	Dimensions		Fixing		Load Capacities
	d_{nom}	L	d_o	h_1	N_{Rd}
Expandet Ceiling Anchor	Outside diameter of anchor mm	Anchor length mm	Drill hole diameter mm	Depth of drilled hole (Min.) mm	Design resistance tension kN*
6x50	6	50	6	35	1,35
8x25	8	25	8	22	1,00
8x32	8	32	8	30	1,00

Design resistance is maximum in concrete $\geq C20/25$. Partial safety factor for material (γ_m) is included. Partial safety factor for actions (γ_f) must be applied according to national building code.

If no guidance for γ_f exists Expandet recommend a partial safety factor for actions of minimum 1,5.

Important: See Expandet's "Principles for fastening" for general information on fastening as well as information on limited liability. (Can be downloaded at www.expandet.com)

 **Advantages:**

- Small embedment depth.
- 8x25 and 8x32 is suitable for fixing in hollow concrete slabs.

 **Materials:**

- Expandet Ceiling Anchor:
- 6x50 mm: Steel, zinc plated min. 5 μ m.
- 8x25 mm: Hardened spring steel, black phosphated.
- 8x32 mm: Hardened spring steel, zinc plated min. 5 μ m.



EXPANDET SCREW ANCHORS A/S
Svendebuen 2-6
P.O. Box 59
DK-3230 Græsted
Denmark

Telephone: +45 70 22 79 79
Telefax: +45 70 22 79 89

Version 06.012

www.expandet.com
expandet@expandet.dk

Graphic: Vedkom /Expandet
©Expandet Screw Anchors A/S, 2006
All rights reserved