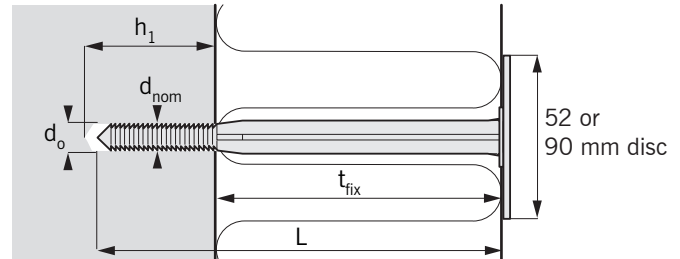
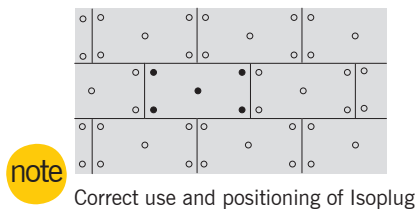
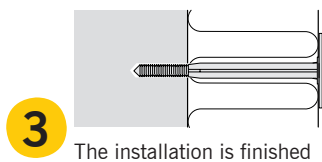
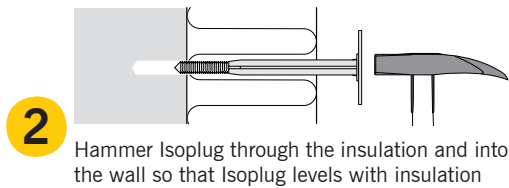
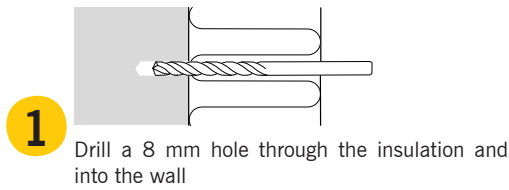




ISOPLUG

Installation:

Keeps soft and hard insulation in position on concrete, solid brick, sand lime brick and aerated concrete



| Type | Dimensions | | | Fixing | | Load Capacities | | |
|---------------------------------|-------------------------------|------------------|--------------------------------|------------------------|---------------------------------|--------------------------|---------------------------|-------------------------------|
| | d_{nom} | L | t_{fix} | d_o | h_1 | N_{rec} | | |
| Expandet Isoplug with expansion | Outside diameter of anchor mm | Anchor length mm | Thickness of fixture (Max.) mm | Drill hole diameter mm | Depth of drilled hole (Min.) mm | Recommended tension load | | |
| | | | | | | Concrete kN* | Solid brick kN \diamond | Sand lime stone kN \diamond |
| 8 x 80 | 8 | 80 | 30- 50 | 8 | 40 | 0,18 | 0,15 | 0,14 |
| 8 x 100 | 8 | 100 | 60- 70 | 8 | 40 | 0,18 | 0,15 | 0,14 |
| 8 x 120 | 8 | 120 | 80- 90 | 8 | 40 | 0,18 | 0,15 | 0,14 |
| 8 x 140 | 8 | 140 | 100-110 | 8 | 40 | 0,18 | 0,15 | 0,14 |
| 8 x 160 | 8 | 160 | 120-130 | 8 | 40 | 0,18 | 0,15 | 0,14 |
| 8 x 180 | 8 | 180 | 140-150 | 8 | 40 | 0,18 | 0,15 | 0,14 |
| 8 x 200 | 8 | 200 | 160-170 | 8 | 40 | 0,18 | 0,15 | 0,14 |
| 8 x 220 | 8 | 220 | 180-190 | 8 | 40 | 0,18 | 0,15 | 0,14 |
| 8 x 240 | 8 | 240 | 200-210 | 8 | 40 | 0,18 | 0,15 | 0,14 |

* Recommended load capacity is maximum for a single anchor in concrete \geq C20/25.
 \diamond Recommended load capacity is maximum for a single anchor in sand lime brick and solid brick with a compressive strength of minimum 15N/mm².
 Safety factor is included (\geq 3). 1 kN \approx 100 kg.

Important: See Expandet's "Principles for fastening" for general information on fastening as well as information on limited liability. (Can be downloaded at www.expandet.com)

Advantages:

- No thermal bridge
- Choose Isoplug according to thickness of insulating material (See table)
- All lengths available with disc:
 - 52 mm for hard insulating boards
 - 90 mm for soft insulating boards

Materials:

Expandet Isoplug is produced in Polypropylene (PP).
 Withstands temperatures from -40°C to +70°C.



EXPANDET SCREW ANCHORS A/S
 Svendebuen 2-6
 P.O. Box 59
 DK-3230 Græsted
 Denmark

Telephone: +45 70 22 79 79
 Telefax: +45 70 22 79 89

Version 06.012

www.expandet.com
expandet@expandet.dk

Graphic: Vedkom /Expandet
 ©Expandet Screw Anchors A/S, 2006
 All rights reserved