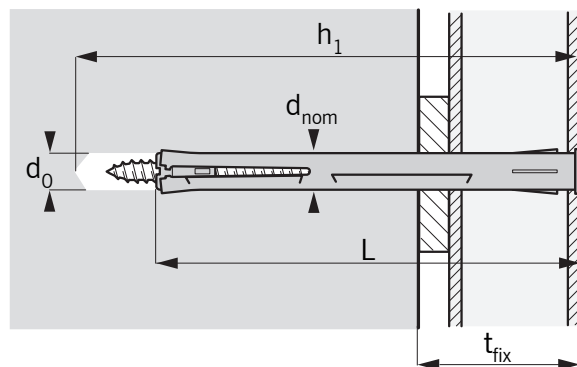
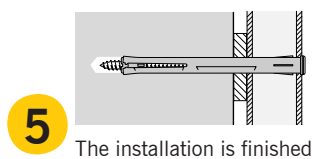
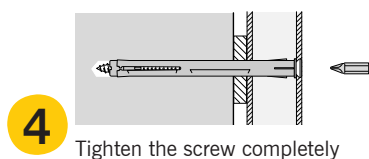
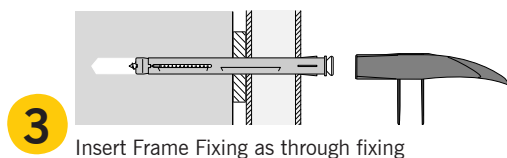
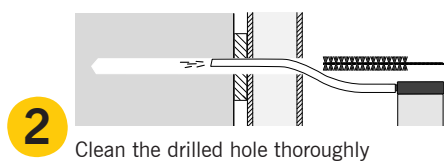
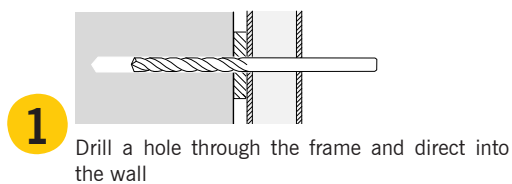




NYLON FRAME FIXING

For fixing of door and window frames of PVC in solid brick and concrete

Installation:



Type	Dimensions			Fixing		Load Capacities
	d_{nom}	L	t_{fix}	d_0	h_1	N_{Rd}
Expandet Frame Fixing	Outside diameter of anchor mm	Anchor length mm	Thickness of fixture (Max.) mm	Drill hole diameter mm	Depth of drilled hole mm	Design resistance tension kN*
10 x 75	10	75	15	10	100	0,50
10 x 100	10	100	40	10	125	0,50
10 x 120	10	120	60	10	145	0,50
10 x 140	10	140	80	10	165	0,50
10 x 165	10	165	105	10	190	0,50

* Design resistance for tension is valid for a single anchor in concrete C20/25.

Safety factor is included (≥ 3). 1 kN \approx 100 kg.

Important: See Expandet's "Principles for fastening" for general information on fastening as well as information on limited liability. (Can be downloaded at www.expandet.com)

Advantages:

Through fixing.
Especially suited for fixing of window and door frames of PVC or aluminium.
No thermal bridge.

Materials:

Expandet Frame Fixing for fixing of PVC window and door frames consists of:
Plug: Nylon (PA6)
Withstands temperatures from -40°C to +80°C
Screw: Steel, zinc plated min. 5 μ m, poz. 3

Accessories:

Self-adhesive FastCap covercaps.



EXPANDET SCREW ANCHORS A/S
Svendebuen 2-6
P.O. Box 59
DK-3230 Græsted
Denmark

Telephone: +45 70 22 79 79
Telefax: +45 70 22 79 89

Version 06.012

www.expandet.com
expandet@expandet.dk

Graphic: Vedkom /Expandet
©Expandet Screw Anchors A/S, 2006
All rights reserved